



*Total Solution Provider in Saw Device*

---

# SL07504AV

75.0MHz IF SAW Filter  
4.73MHz Bandwidth  
Revision 0 : 26. Nov. 2008



- Electrical Characteristics
  - Package Dimensions
  - Testing Environment
  - Frequency Characteristics
- 

**SAWNICS Inc.**

---

460 Cheonheung-ri, Seonggeo-eup, Cheonan-si, Chungcheongnam-do, 330-836 / Korea.  
Tel: +82 41 550 9372 / Fax: +82 41 550 9399 / [www.sawnics.com](http://www.sawnics.com)

## □ Electrical Characteristics

### Maximum Ratings

Parameters Description	Unit	Minimum	Typical	Maximum
Operating Temperature Range	°C	-	25	-
Storage Temperature Range	°C	-40	-	85
Maximum DC Voltage	V	-	-	10
Maximum Input Power	dBm	-	-	10
Source Impedance (single ended) <sup>(1)</sup>	Ω	-	50	-
Load Impedance (single ended) <sup>(1)</sup>	Ω	-	50	-
Package type & size	V			
Length x Width	mm <sup>2</sup>	-	13.3 x 6.5	-
Height	mm	-	-	1.8

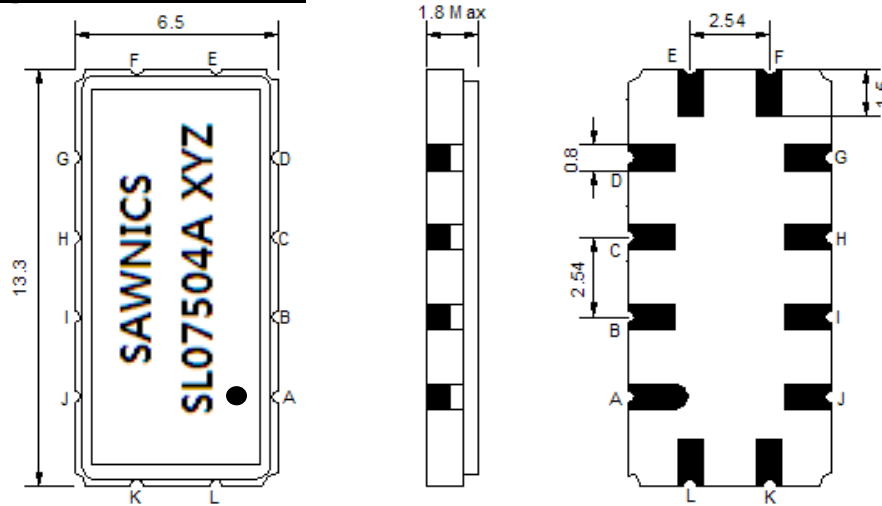
### Electrical Specification

Parameters Description	Unit	Minimum	Typical	Maximum
Center Frequency (Fo)	MHz	-	75.0	-
Insertion Loss at Fo	dB	-	13.0	15.0
Temperature Coefficient	ppm/°C	-	-86	-
Amplitude Ripple within fo ±2.0 MHz	dB <sub>p-p</sub>	-	0.3	0.8
Group Delay Variation within fo ±2.0 MHz	nsec	-	50	80
Absolute Delay at Fo	µsec	-	1.58	-
Bandwidth at -1.0 dB	MHz	-	4.73	-
Bandwidth at -3.0 dB	MHz	-	5.25	-
Bandwidth at -30.0 dB	MHz	-	6.8	-
Bandwidth at -40.0 dB	MHz	-	7.0	-
Ultimate Attenuation:	-	40	45	-

**Notes :** (1) With Matching Network (Ref. Testing Environment Circuit as shown below).

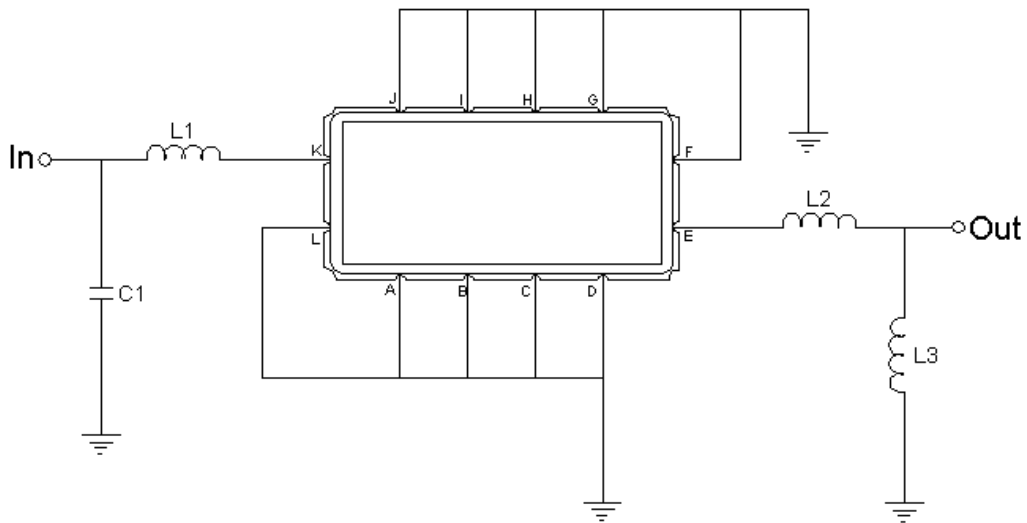
Those impedances could be modified with different impedance values and/or structures, if necessary.

**Package Dimensions**



Pin Description	
A, B, C, D, F, G, H, I, J, L	Ground
K	Input
E	Output

**Testing Environment**



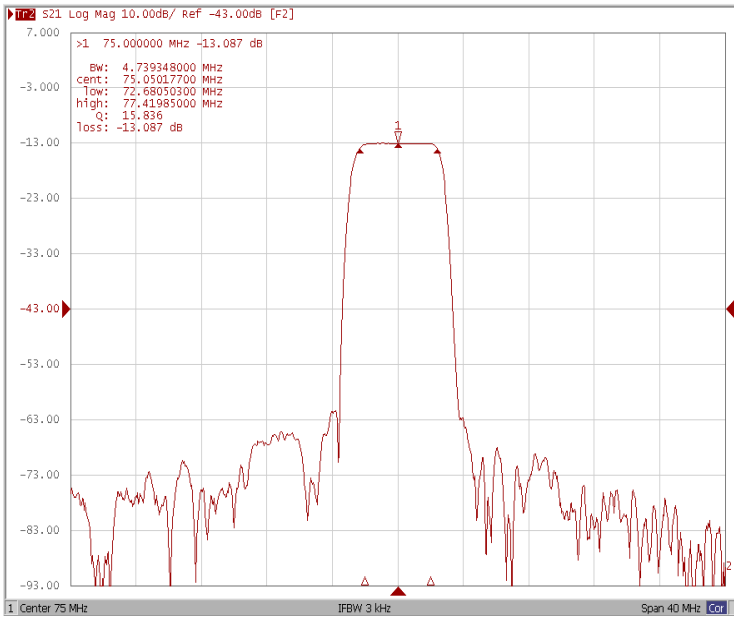
Test Fixture & Values	
Input	L1=56nH , C1=150pF
Output	L2=3.9nH , L3=33nH
Source/Load Impedance	50 Ω



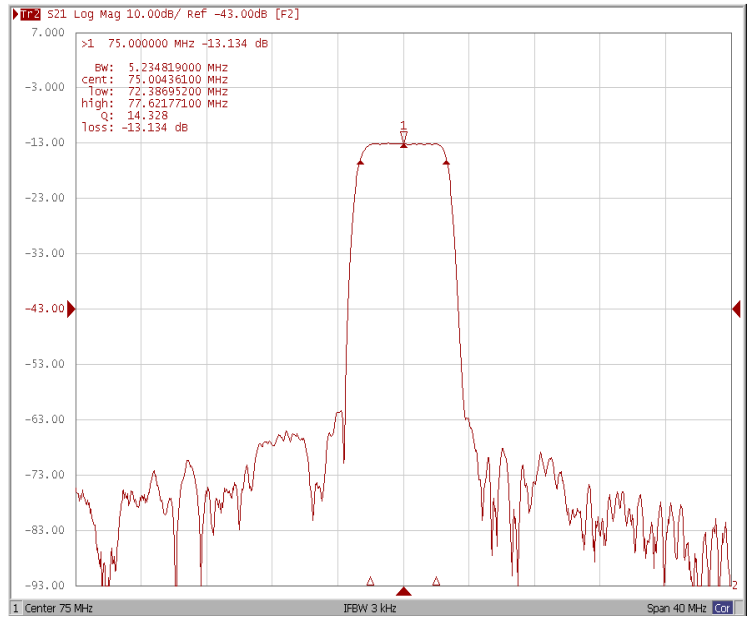
**Frequency Characteristics**

**Frequency Response**

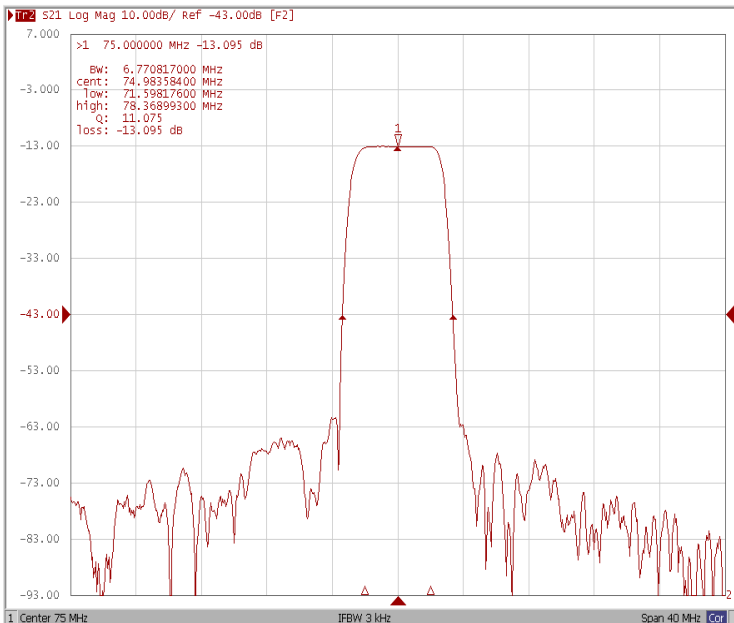
**Bandwidth at -1.0 dB**



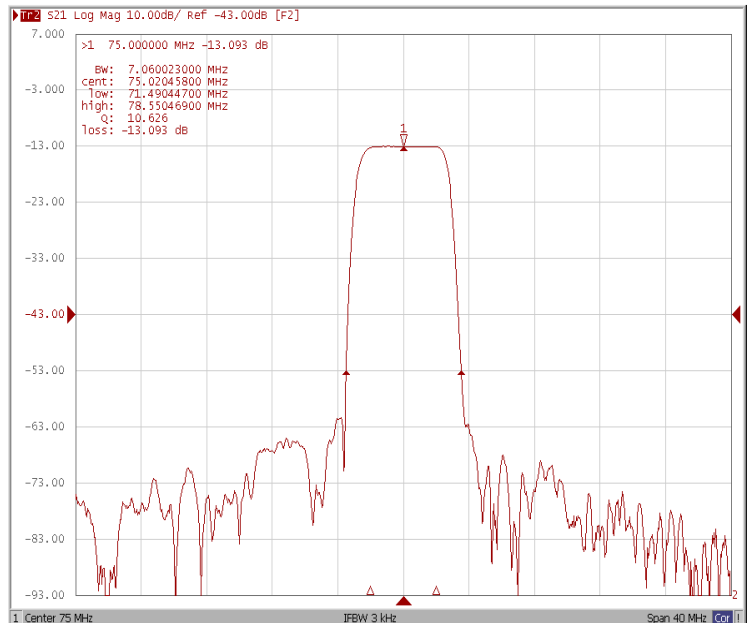
**Bandwidth at -3.0 dB**



**Bandwidth at -30.0 dB**



**Bandwidth at -40.0 dB**

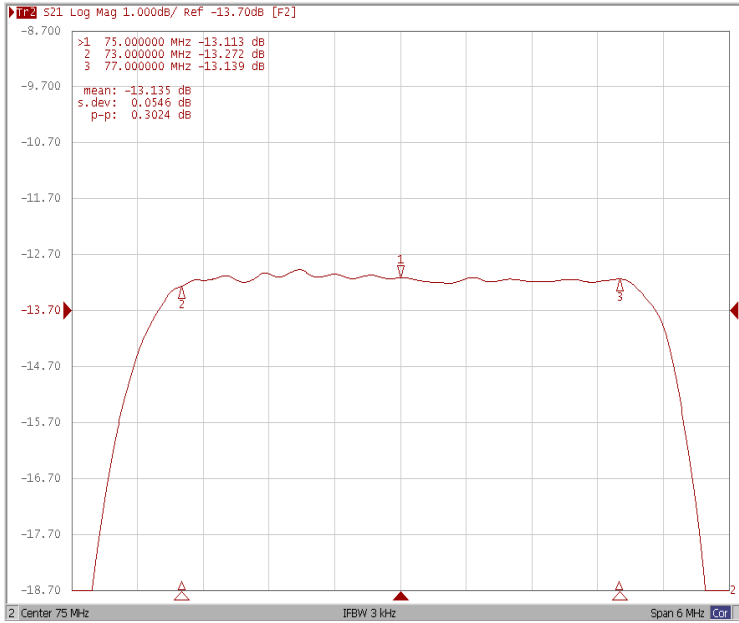




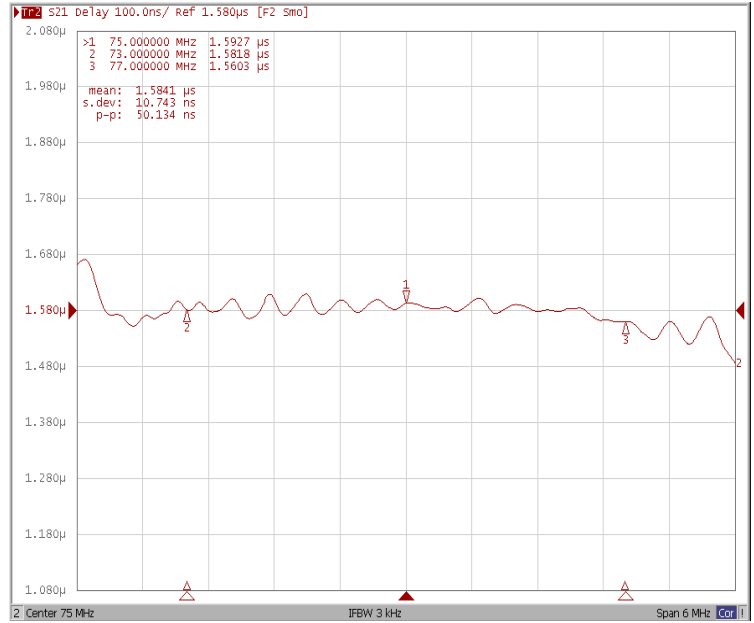
**Frequency Characteristics**

**Frequency Response**

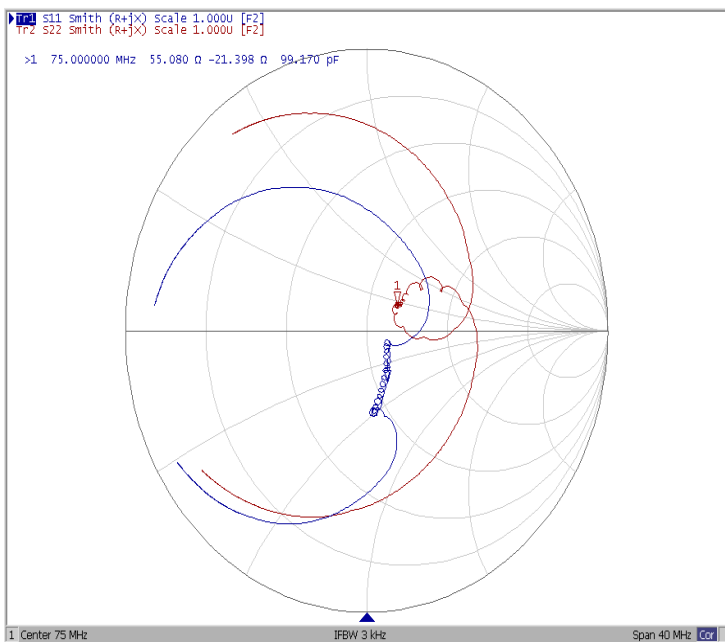
**Ripple Variation Fo±2.0MHz**



**Group Delay Variation Fo±2.0MHz**



**Smith Chart**



**VSWR**

